

LSR85-100

3.5 Cubic Ft. Ultra-low Freezer



Temperature Range

-40°C to -86°C

Exterior w x d x h(mm)

450x439x514

Internal w x d x h (mm)

450x439x514

Capacity(L)

100

Weight (kgs)

145

-86°C Ultra-low Temperature Freezer

Precise Temperature Control and Safe Storage

Microprocessor-based temperature controller, -40°C~-86°C can be set freely with display accuracy at 0.1°.

Visual & Audio Alarm system

High/low temperature alarm, power failure alarm, low battery alarm, door ajar alarm, high air temperature alarm, communication failure alarm.

Human-oriented

The rotating handle facilitates door opening; The two-door design including the inner door and the outer door can lock cool air inside the cabinet and ensure thermal insulation for a long period.

Energy-saving & Environmentally Friendly

Awarded with China Certificate for Energy Conservation Product.



High-precision Temperature Control

- Digital temperature display, simultaneously display the chamber temperature, power supply voltage, ambient temperature and other parameters etc. The running status is clearly displayed;
- The high-precision microcomputer temperature control system and platinum resistor temperature sensors enable users to set temperature inside the cabinet within a range from -40°C to -86°C.



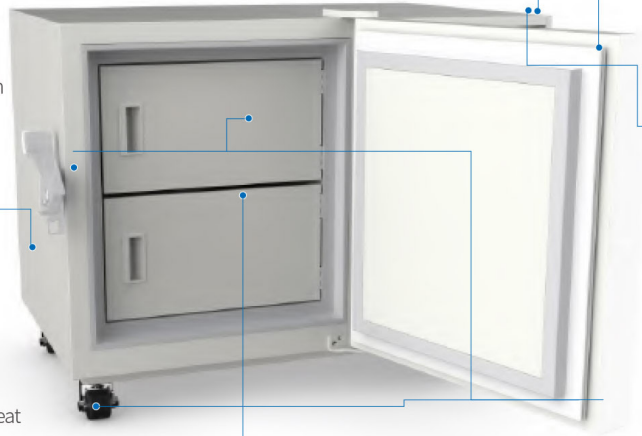
Refrigeration System

- The imported high-efficiency compressor and EBM fan are energy-saving and highly efficient;
- The large finned condenser with a space between fins $\leq 2\text{mm}$, providing a effective heat dissipation.
- Standard with VIP board for high efficiency cooling performance. Door with hot gas pipe surrounding for defrost.



Supplies for Cryopreservation

Inventory racks/boxes for cryopreservation are optional.



Thermal Insulation System

- The two-layer insulated foamed door with double seal and the outdoor insulation design with multiple patents can prevent loss of cooling capacity effectively;
- The six sides of the cabinet are made from high-performance vacuum insulation material, greatly improving thermal insulation performance.



Security System

- The perfect audible & visual alarm system: high/low temperature, sensor failure, door open, power failure etc.;
- The turn-on delay and stopping interval protection can ensure reliable operation;
- The keyboard lock and password protection can prevent any adjustment of operation without permission;



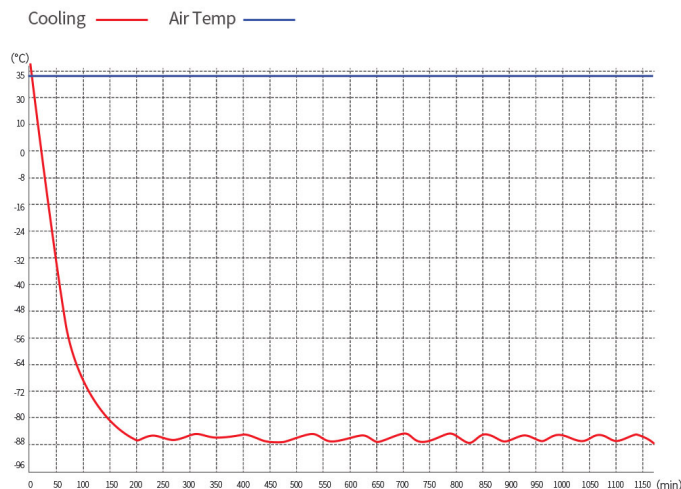
Human-oriented

- The door with new-type assisting door handle to be opened easily;
- Door handle with lock for safety operation..
- Galvanized steel sheet interior, low temperature resistance anti-corrosion for long service life and easy cleaning;
- Universal wheels easy for movement and fixation.

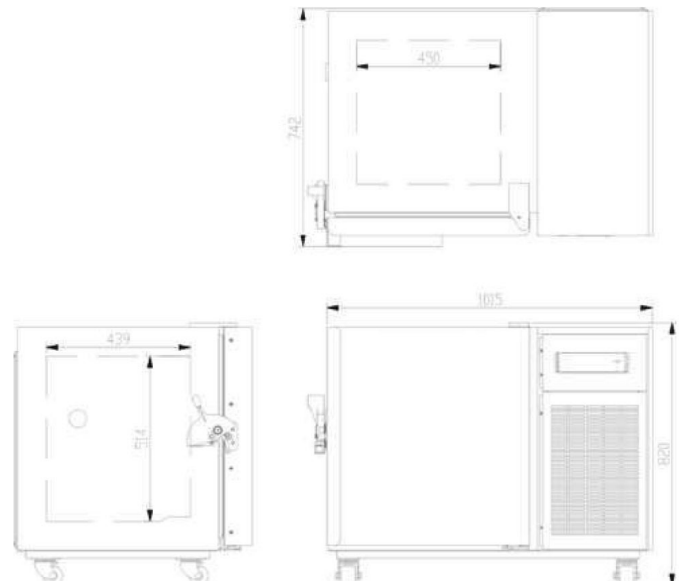
✓ Scope of Application

Suitable for use in blood banks, hospitals, health and disease prevention systems, research institutions, colleges & universities, the electronic industry, biological engineering, laboratories in colleges & universities, military enterprises, deep-sea fishing companies, etc.

🔗 Performance Data / Cooling Curve



📏 Eternal Dimension



Model		GLACIER-04
Cabinet Type	Upright	
Capacity(L)	100	
Internal Size(W*D*H)mm	450*439*514	
External Size(W*D*H)mm	1066*742*820	
Package Size(W*D*H)mm	1200*863*991	
NW/GW(Kgs)	145/176	
Performance		
Temperature Range	-40°-86°	
Ambient Temperature	16-32°	
Cooling Performance	-86°	
Climate Class	N	
Controller	Microprocessor	
Display	Digital display	
Refrigeration		
Compressor	1pc	
Cooling Method	Direct cooling	
Defrost Mode	Manual	
Refrigerant	HC m ixture gas	
Insulation Thickness(mm)	115	
Construction		
External Material	Steel plates with spraying	
Inner Material	304 stainless steel	
Shelves	1(stainless steel)	
Door Lock with Key	Yes	
External Lock	Yes	
Access Port	1pc. Ø 40 mm	
Casters	4	
Data Logging/Interval/Recording Time	USB/Record every 10 minute / 2 years	
Backup Battery	Yes	
Alarm		
Temperature	High/Low temperature,High ambient temperature	
Electrical	Power failure , Low battery	
System	Sensor error, Condenser cooling failure, Door ajar Recorder error Main board communication error	
Electrical		
Power Supply(V/HZ)	110/60	
Rated Current(A)	12.3	
Telecom contact	RS 485	
Remote alarm contact	DC 30V 2A	